

Optimization of Process Parameters in Deep Drawing Operation

Jitendra Kumar Singh^{1*}, Vinay Kumar Singh²

¹Department of Mechanical Engineering, GLBITM Greater Noida, India

ABSTRACT

Wrinkling and tearing are common surface defects in sheet metal forming. It is unacceptable in the head light reflectors, because, any alteration in the reflector contour may affect its functionality. Due to the rejection or rework of the defective part, there is wastage in the production process, not only in terms of time but money as well. So, the prediction and prevention of defects becomes necessary. **Luman Auto Light Pvt. Limited** was facing a problem in manufacturing of the headlight reflector. The problem was that wrinkles appear on the curved surface of reflector along with cracking in some of the parts during the drawing operation. Therefore, it was necessary to find out the causes of wrinkling and cracks so as to minimize losses.

In experimental methodology, three basic steps were carried out to find out the causes of defect in the drawn component. In the first step, the process was studied to explore the various causes for the wrinkle formation. The process was studied in detail and the actual conditions in the company were also studied. In the second step, Taguchi method was used to design the set of experiments that were to be carried out for the defect analysis of the drawn component. Three parameters were varied at four levels each and L16 orthogonal array was used. Three parameters were blankholder force, friction coefficient and punch speed. In the third step, simulation of the experiments gave results in the form of thickness distribution. Using signal to noise ratio, the optimum level of each parameter was decided. Further, the contribution of each parameter to the quality of the drawn component was studied.

Keywords- Wrinkling, Tearing, Head light reflector, Taguchi Method, L16 orthogonal array, Signal to noise ratio.

I INTRODUCTION

Deep drawing operation depends upon many parameters like blankholder force, friction conditions, material properties of the blank, die radius, punch radius, punch-die clearance, punch speed and sheet thickness. In the present work three dominant parameters that are blankholder force, friction coefficient and punch speed were varied to find out the reasons that caused wrinkling and thinning.

II PROBLEM DEFINITION

Luman Automotive Systems Pvt. Ltd. situated at Udyog Nagar New Delhi is a leading manufacturer of various sheet metal components. The Head Light reflector manufactured by company for Tata 407 vehicle is made by deep drawing operation is having wrinkling and cracking defect.

The part is having the problems of wrinkling and tearing during the drawing operation as shown in Figure 2.1.



FIGURE 2.1 Defected Part having (a) Wrinkling and (b) Tearing

These defected parts cannot be assembled in headlight as it will affect the functionality of headlight reflector.

III EXPERIMENTAL METHODOLOGY

The various parameters that affect the drawing operation like Blankholder force, friction coefficient and punch speed were studied. It was observed that smaller value of blankholder force was responsible for wrinkle formation while the larger value resulted in tearing of sheet. Larger value of friction helps obtaining good drawable height. Smaller value of punch speed helps in drawing of the component by restraining the material flow while larger value could results in to tearing of sheet.

The work piece was a sheet of size 325 mm x 300 mm x 0.75 mm. The material of sheet was IS: 513 DD grade (Deep Draw) Cold Rolled Close Annealed (CRCA) steel.

3.1 Design of Experiments

In this work, it was planned to study the behaviour of three control factors which were, A (Blankholder force), B (Friction coefficient) and C (Punch Speed). The observations from simulation results were further transformed into signal to noise (S/N) ratio. There are several ratios depending upon objective of optimization of the response. The characteristic with higher value represents better quality drawing [33].

TABLE 3.1 LEVELS OF CONTROL FACTORS

DESIGN FACTORS ↓	LEVELS			
	1	2	3	4
A (Blankholder force) (kN)	75	100	125	150
B (Friction Coefficient)	0.01	0.057	0.104	0.15
C (Punch Speed) (mm/s)	100	150	200	250

3.1.2 Simulation

The experiments decided by Taguchi approach were simulated in Simufact 11.0.1 application software. A total of 16 experiments were carried out as decided by L16 orthogonal array.

IV RESULTS AND DISCUSSIONS

4.1 Signal-to-Noise Ratio and Response of Process

One of the quality criteria in sheet metal formed parts is thickness distribution. Failure in deep drawn components generally takes place by thinning; hence, it is desirable to determine the variation of strain in thickness direction during deformation. The objective is to reduce thickness variation in deep drawn part as well as minimize thinning. Therefore, in this study, the response selected from the experiments is thickness distribution. Taguchi's main idea was to control the noise factors indirectly by examining how they are affected by different settings of control factors. It analyses the combined effects of control and noise factors, and for this purpose, proposed performance criteria known as signal-to-noise ratio (S/N). [19]:

$$S/N = 10\log(y_m^2 / s^2) \quad \dots(4.1)$$

$$s^2 = \Sigma(y_i - y_m)^2 / (n-1) \quad \dots(4.2)$$

$$y_m = \Sigma y_i / n \quad \dots(4.3)$$

Where y is the measured value of thickness, and n is the number of positions for measured values of y.

The S/N ratios were calculated along the profile on the component as shown in Figure 4.1.

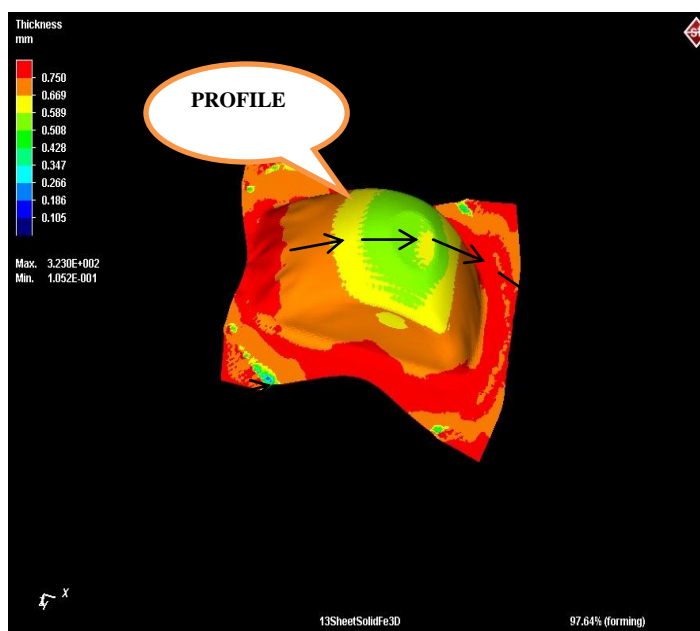


FIGURE 4.1 THICKNESS VALUES TAKEN ON COMPONENT
The S/N Ratio that were calculated from equations 4.1 to 4.3 are given in Table 4.1

TABLE 4.1 S/N RATIOS FOR EXPERIMENTS

EXPERIMENT NO.	S/N RATIO	EXPERIMENT NO.	S/N RATIO
1	17.377694	9	17.405692
2	17.942578	10	17.750066
3	17.956835	11	17.434178
4	15.198881	12	16.229857
5	17.30045	13	17.679104
6	17.609999	14	18.216518
7	17.200994	15	17.767581
8	15.657024	16	16.632930

The level average and the percent contribution of each parameter were calculated as described below [19]. The overall mean from which all the variation is calculated is given by

$$S/N_m = (1/n) \sum (S/N_i) \quad \text{----- (4.4)}$$

Where n is the number of test runs.

The grand total sum of squares (GTSS) is given by

$$S_T = \sum (S/N_i)^2 \text{-----(4.5)}$$

It can be decomposed in to two parts: the sum of squares due to overall mean and the sum of squares due to variation around overall mean:

$$S_T = S_m + S_v \text{----- (4.6)}$$

The sum of squares due to overall mean is

$$S_m = n.(S/N_m)^2 \text{----- (4.7)}$$

Where n is the number of test runs. The sum of squares due to variation around overall mean is

$$S_v = (1/n) \sum (S/N_i - S/N_m)^2 \text{----- (4.8)}$$

The S_v can be further decomposed in to the sums of the squares of the variation induced by individual parameter effects around overall mean. For parameter A, the sum of squares due to variation around overall mean is;

$$S_{jA} = n_{A1}(S/N_{mA1} - S/N_m)^2 + n_{A2}(S/N_{mA2} - S/N_m)^2 + n_{A3}(S/N_{mA3} - S/N_m)^2 \text{---- (4.9)}$$

Where n_{Ai} is the number of tests conducted at level i of parameter A; S/N_{mAi} is the level average S/N of parameter A at level i. Similarly, the sum of squares due to variation around overall mean is calculated for the remaining two parameters. Then, the contribution of each parameter is calculated:

$$C_j = S_{jA} / S_v \text{----- (4.10)}$$

The mean value of S/N ratio in all experiments is given as 17.210023. The level average response analysis by S/N ratios is shown in Figure 4.2.

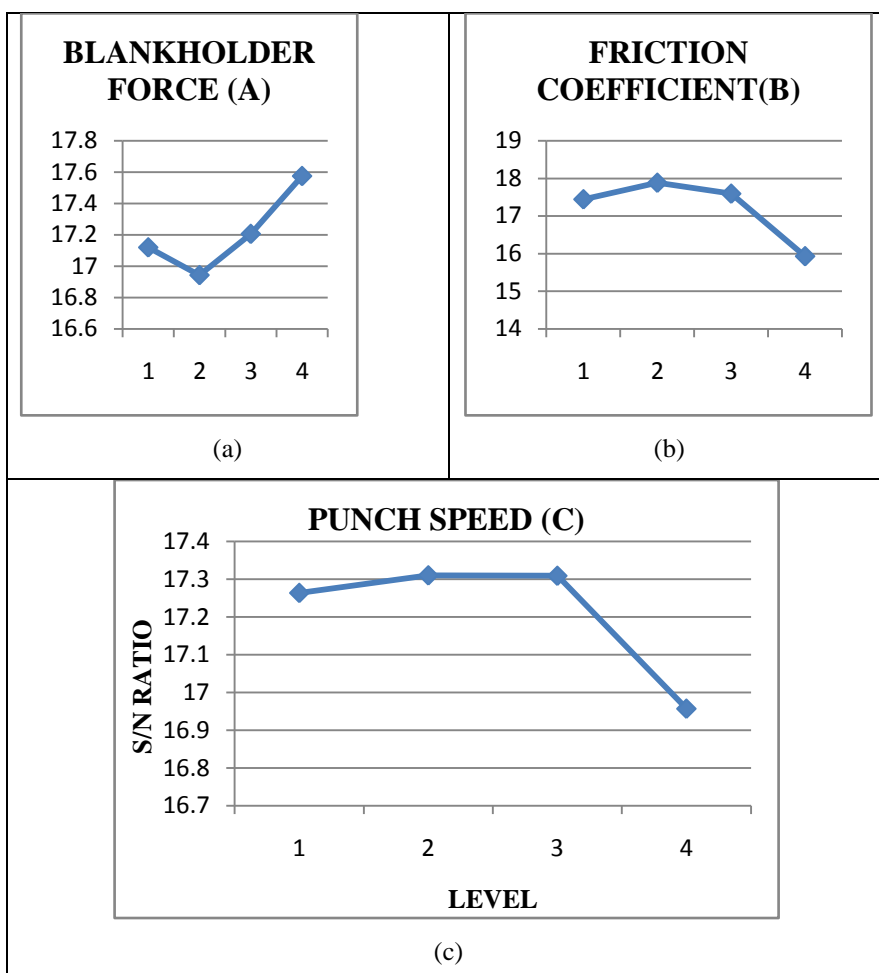


FIGURE 4.2 PLOTS OF LEVEL AVERAGE VALUES OF THREE PARAMETERS (A) BLANKHOLDER FORCE; (B) FRICTION COEFFICIENT; (C) PUNCH SPEED

For optimum values of the selected parameters, the level that gives the highest S/N ratio was chosen [19]. Therefore it can be concluded that optimum level for BHF, Friction Coefficient and Punch Speed is 150 kN, 0.057 and 150 mm/s respectively.

Equations 4.8, 4.9 and 4.10 are used to find the values of S_v , S_j and C_j . The value of S_v is 10.33837. The calculations of contributions of the parameters are shown in Table 4.3.

TABLE 4.3 CONTRIBUTIONS OF PARAMETERS

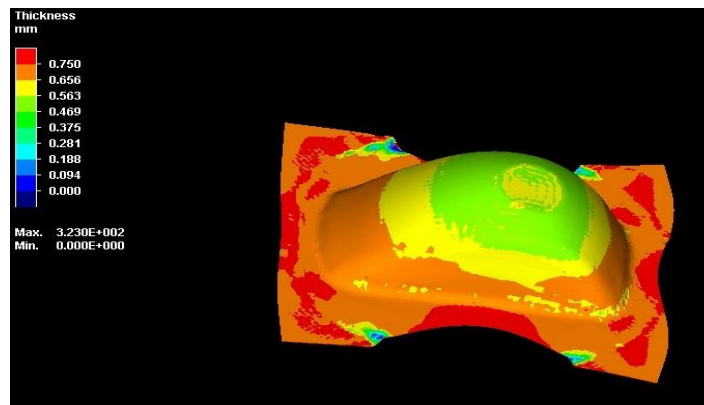
PARAMETER	LEVEL	S/N _{mn}	S _j	% CONTRIBUTION
A (BHF)	75 kN	17.118997	0.850356	8.22524
	100 kN	16.942116		
	125 kN	17.204948		
	150 kN	17.574033		
B (FRICTION COEFFICIENT)	0.01	17.440734	9.141664	88.424616
	0.057	17.879790		
	0.104	17.589897		
	0.15	15.929673		
C (PUNCH SPEED)	100 mm/s	17.263700	0.346352	3.350160
	150 mm/s	17.310116		
	200 mm/s	17.309017		
	250 mm/s	16.957261		

It can be observed that the maximum contribution is of Friction coefficient i.e. 88.4%, followed by Blankholder force and Punch Speed.

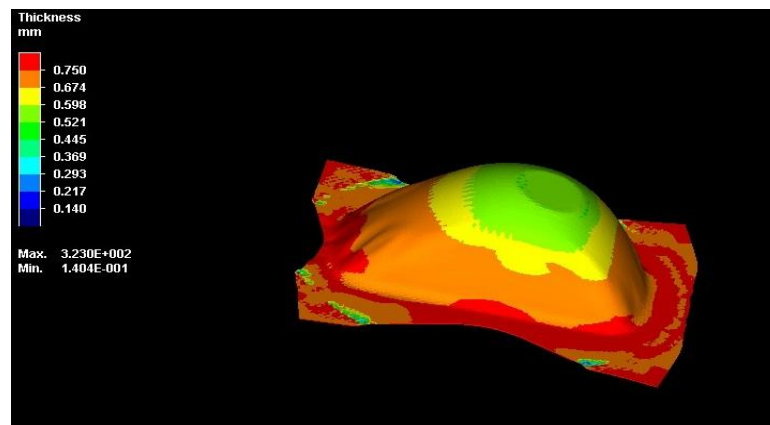
The Friction Coefficient has maximum effect on quality of drawn component with the percentage of 89%. This is followed by Blankholder force with percentage of 8%. The Punch Speed has lowest contribution with a percentage of 3%.

4.2 Simulation of the Drawing Operation Using Optimized Parameters

The simulation was performed using optimum parameters as defined by Table 4.4. The thickness distribution in simulation as per optimum parameters and existing parameters is shown in Figure 4.3.



(a)



(b)

FIGURE 4.3 THICKNESS DISTRIBUTION OBTAINED WITH(a) OPTIMISED PARAMETERS AND (b) EXISTING PARAMETERS

On comparison with actual case it was found that the wrinkled region at curved inclined portion had reduced. It was also observed that, in the wrinkle prone region, the variation in thickness with optimized parameters was 0.65 mm to 0.75 mm, whereas, it was 0.65 mm to 0.85 mm, in case of existing parameters. This indicates an improvement in thickness distribution. So, it was concluded that the wrinkles could be reduced by using optimized parameters. Though, the thinning area around the nose radius increased, but still, the minimum thickness was 0.469 mm, which was more than the actual case where the minimum thickness was 0.293 mm.

V .CONCLUSIONS

Various conclusions were derived from the analysis of the results which are discussed below;

- (i) It was observed that the most dominant parameters that affected the drawing operation were blankholder force, friction coefficient and punch speed.

- (ii) The friction coefficient contributed 80 % to the quality of drawing operation. The optimized value was 0.057, while, the actual value that was being used was 0.01. So, the larger of friction coefficient could be used so that the material flow can be constrained, because more metal flow into the die cavity results in thickening of sheet and hence, wrinkling.
- (iii) The blankholder force had a contribution of 15%. The actual value was 100 kN, while, the recommended value is 150 kN. This implies that the blankholder value must be increased for the proper metal flow while drawing.
- (iv) The punch speed had a contribution of 5%. The actual value was 200 mm/s and it is to be reduced to 150 mm/s to improve metal deformation rate.

REFERENCES

- [1]A. Ravi Teja and A. Chennakesava Reddy, “Finnite Element analysis of Single Point incremental Deep Drawing Process for Truncated Pyramidal Cups from AA 1070 Alloy”, International Journal of Innovative Science, Engineering and Technology, Vol.3, Issue 6, **June 2016**, pp. 263-268.
- [2] Kanhaiya Saw and Prabhat Kumar, “Effect of Heat Treatment on Deep Drawing of stainless steel 304 Foil of Thickness 0.1 mm”, 4th International Conference on recent Innovations in Science, Engineering and Management, **2016**, pp. 86-92.
- [3]Tobias Schulze, Jurgen Weber, Knut Grobmann, Lars Penter and ChristerSchenke, “Hydraulic Die Cushions in Deep Drawing Presses-Analysis and Optimization using Coupled Simulation”, Proceedings of the ASME / BATH 2015 Symposium on Fluid Power and Motion Control,**2015**, pp. 1-11.
- [4]A.C.S. Reddy, S. Rajesham and P.R. Reddy, “Experimental and Simulation Study on the Warm Deep Drawing of AZ 31 Alloy”, Advances in Production Engineering and Management, Vol. 10, **Sep. 2015**, pp. 153-161.
- [5]M.A. Hassan, I.M. Hassab-Allah, L.M.A. Hezam, N.A. Mardi and M. Hamdi, “ Deep Drawing of Asymetric Cups Through Conical Die without Blankholder”, Proceedings of the World Congress on Engineering, Vol.II, **July 2015**, ISBN 978-988.
- [6] Alin Pop, Ion radu and Florin Blaga, “Finite Element Analysis Study on Deep Drawing Speed Punch”, Romanian Association of Non Conventional Technologies, **2015**, pp. 46-50.
- [7] N. Arab., “Numerical and Experimental Research of Deep Drawing Process”, Journal of Solid Mechanics, Vol. 6 (**2014**), pp. 19-27.
- [8] M. El Sherbiny, H.Zein, M. Abd-Radu and M.ElShazly,“Thinning and Residual Stresses of Sheet Metal in Deep Drawing Process”, Material and Design 55(ELSEVIER), **2014**, pp. 869-879.
- [9] Ashwin Kumar Bhaisarar, Abhishek Jain, “Optimization of blank holding Pressure in Deep Drawing process through FEA”, International Journal of Engineering Inventions, Volume 3, Issue 4 (**November 2013**), pp. 61-66.

- [10] Pop Alin, MihailaIoan, RaduIoan, Blaga Florin, "Parameters Influence on Wrinkling In Deep Drawing Cylindrical Cups", *Nonconventional Technologies Review Romania*, **Sep. 2013**, pp. 59-63.
- [11] Gyadari Ramesh, Dr.G.Chandra Mohan Reddy, "Analysis of Optimization of Blank Holding Force In Deep Drawing By Using LS DYNA", *International Journal of Engineering Research and Applications*, Volume 3, Issue 4, **Jul-Aug 2013**, pp.1975-1995.
- [12] Y.N. Dhulugade, P.N. Gore, "Design and Development Sheet Metal 'Draw' Component Using CAE Technology", *International Journal of Emerging Technology and Advanced Engineering*, Volume 3, Issue 3, **March 2013**, pp. 30-39.
- [13] R. Uday Kumar, "Distribution of Radial Stresses In Deep Drawing Process", *International Journal of Emerging Science and Engineering*, Vol. 1, Issue 6, **April 2013**, pp. 92-95.
- [14] R. Venkat Reddy, Dr T.A. Janardhan Reddy, Dr G.C.M. Reddy, "Effect of Friction Factor on Wrinkling and Fracture Limits in Deep Drawing Of Cylindrical Cup" *International Journal of Engineering Research and Technology*, Vol. 6, **2013**, pp. 75-86.
- [15] TahirAltinbalik and Aysun Tonka, "Numerical and Experimental study of Sheet Thickness Variation in Deep Drawing Process", *International Journal of Modern Manufacturing Technologies*, Vol. 4.,**2012**. pp. 9-16.
- [16] KopanathGowtham, K.V.N.S. Srikanth, K.L.N. Murthy, "Simulation of the effect of Die Radius on Deep Drawing Process", *International Journal of Applied Research in mechanical Engineering*, Vol. 2, Issue 1, **2012**, pp. 12-17.
- [17] R. Venkat Reddy, Dr T.A. Janardhan Reddy, Dr. G.C.M. Reddy, "Effect of Various Parameters on the Wrinkling In Deep Drawing Cylindrical Cups" *International Journal of Engineering Trends and Technology*, Volume 3, Issue 1, **2012**, pp. 53-58.
- [18] F. Ayari, E. Bayraktar, "Parametric Finite Elements Analysis for a square cup Deep Drawing Process" *Journal of Achievements in Materials and Manufacturing Engineering*, Vol. 48, Issue 1, **Sep. 2011**, pp. 64-86.
- [19] S. Raju, G. Ganeshan and R. Karthikeyan, "Influences of Variables in Deep Drawing of AA 6061 Sheet", *Transactions of Nonferrous Metal Society, China*, **2010**, pp. 1856-1862.
- [20] JohannesnWinklhofer, GernotTrattnig, Christoph Lind, ChristofSommitsch, HannesFeuerhuber, "Simulation of Aluminium Sheet Metal Deep Drawing at Elevated Temperatures using LS-Dyna", *LS-DYNA Forum, Bamberg 2010*, C-III-1 to C-III-8.
- [21] G. Venkateswarlu, M.J. Davidson, G,R,N. Tagore, "Influence of Process Parameters on the Cup Drawing of Aluminium 7075 sheet, " *International Journal of Engineering, Science and Technology*, Vol.2, No. 11, pp. 41-49.
- [22] GAO En-zhi, LI Hong-wei, KOU Hong-chao, CHANG Hui, LI Jin-shan, ZHOU Lian, "Influence of material Parameters on Deep Drawing of Thin-Walled Hemispheric Surface Part", *Transactions of Nonferrous Metals Society of China* 19 (**2009**), pp. 433-437.

International Conference on Computational and Experimental Methods in Mechanical Engineering

G.L. Bajaj Institute of Technology and Management, Greater Noida (U.P) India

ICCEMME-2017

8th-9th December 2017, www.conferenceworld.in

ISBN: 978-93-86171-85-6

- [23] J. Malekani, A. Mostafa Pour, M. Eskandarzade, Abolfazl Totonchi, "Numerical and Experimental Investigation Die and Blank Holder Shape in Deep Drawing Process", Journal of Applied Sciences 8 (11), **2008**, pp. 2153-2157.
- [24] R. Padmanabhan, M.C. Oliveira, J.L. Alves, L.F. Menezes, "Numerical Simulation and analysis on the Deep Drawing of LPG Bottles", Journal of Material Processing Technology 200 (**2008**), pp. 416-123.
- [25] Y. Marumo, H. Saiki and L. Ruan, "Effect of sheet thickness on Deep Drawing of metal foils", Journal of Achievements in Materials and Manufacturing Engineering, Vol. 20, **2007**, pp. 479-482.
- [26] Ivana Suchy, "Handbook of Die Design", Tata McGraw Hill Company Limited, second edition, **2006**.
- [27] Cyril Donaldson, George H. Iecain and V.C. Goold, "Tool Design", Tata McGraw Hill Company Limited, **2006**.
- [28] ASM Handbook, Metal working: Sheet Forming, Volume 14B, **2006**.
- [29] S. Aleksandrovic, M. Stefanovic, "Significance and Limitations of Variable Blank Holding Force Application in Deep Drawing Process", Tribology in Industry, VOLUME 27, No. 1&2, **2005**, pp. 48-54.
- [30] Y. Park, J.S. Colton, "Failure Analysis of Rapid Prototyped Tooling in Sheet metal Forming- Cylindrical Cup Drawing", Journal of Manufacturing Science and Engineering, Vol. 127, Feb. 2005, pp. 126-137.
- [31] Viorel Pauniou and Dumitru Nicoara, "Simulation of Friction Phenomenon in Deep Drawing Process", National Tribology Conference, Galati, Romania, **Sep. 24-26, 2003**, pp. 407-412.
- [32] Evin, Emil-Hrivnak, Andrej-Tkacova and Jana, "Measurement and Evaluation of Friction Ratios at Deep Drawing", Journal for Technology of Plasticity, Vol.26, **2001**, pp. 81-88.
- [33] T.P. Bagchi, "Taguchi methods explained", Prentice Hall of India, New Delhi, **1993**.
- [34] www.thelibraryofmanufacturing.com